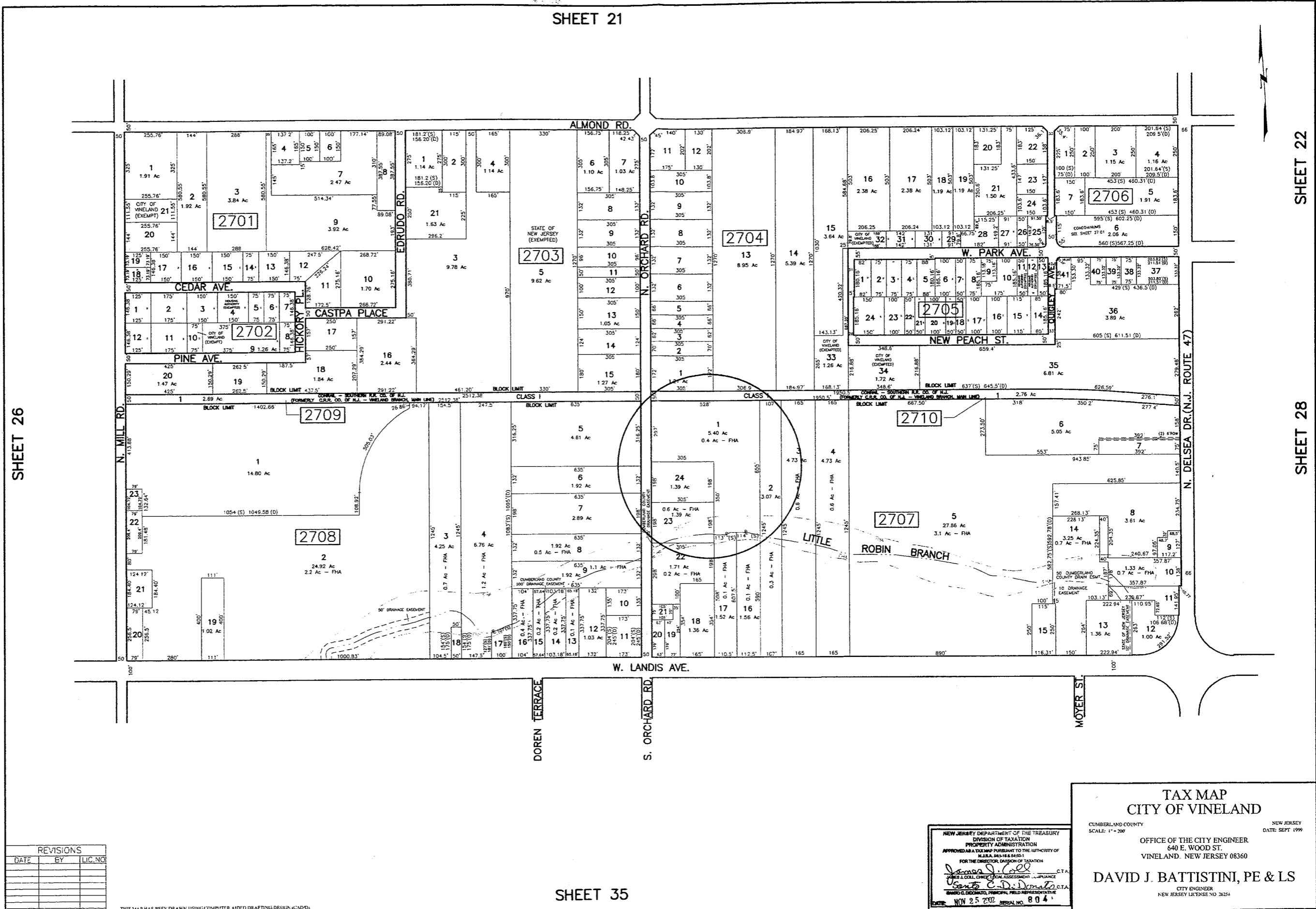


SHEET 21



SHEET 26

SHEET 22

SHEET 28

SHEET 35

REVISIONS		
DATE	BY	LIC. NO.

THIS MAP HAS BEEN DRAWN USING COMPUTER AIDED DRAFTING DESIGN (CADD)

NEW JERSEY DEPARTMENT OF THE TREASURY
 DIVISION OF TAXATION
 PROPERTY ADMINISTRATION
 APPROVED AS A TAXMAP PURSUANT TO THE AUTHORITY OF
 N.J.S.A. §§17-18 & 18-20
 FOR THE DIRECTOR, DIVISION OF TAXATION
James J. Hill C.T.A.
Scott E. D. D'Amico C.T.A.
 SENIOR CLERK / NON-ASSESSMENT COMPLIANCE
 SENIOR CLERK / SENIOR FIELD REPRESENTATIVE
 DATE: NOV 25 2002 SERIAL NO. 804

TAX MAP
 CITY OF VINELAND
 CUMBERLAND COUNTY NEW JERSEY
 SCALE: 1" = 200'
 OFFICE OF THE CITY ENGINEER
 640 E. WOOD ST.
 VINELAND, NEW JERSEY 08360
DAVID J. BATTISTINI, PE & LS
 CITY ENGINEER
 NEW JERSEY LICENSE NO. 26254
 DATE: SEPT 1999