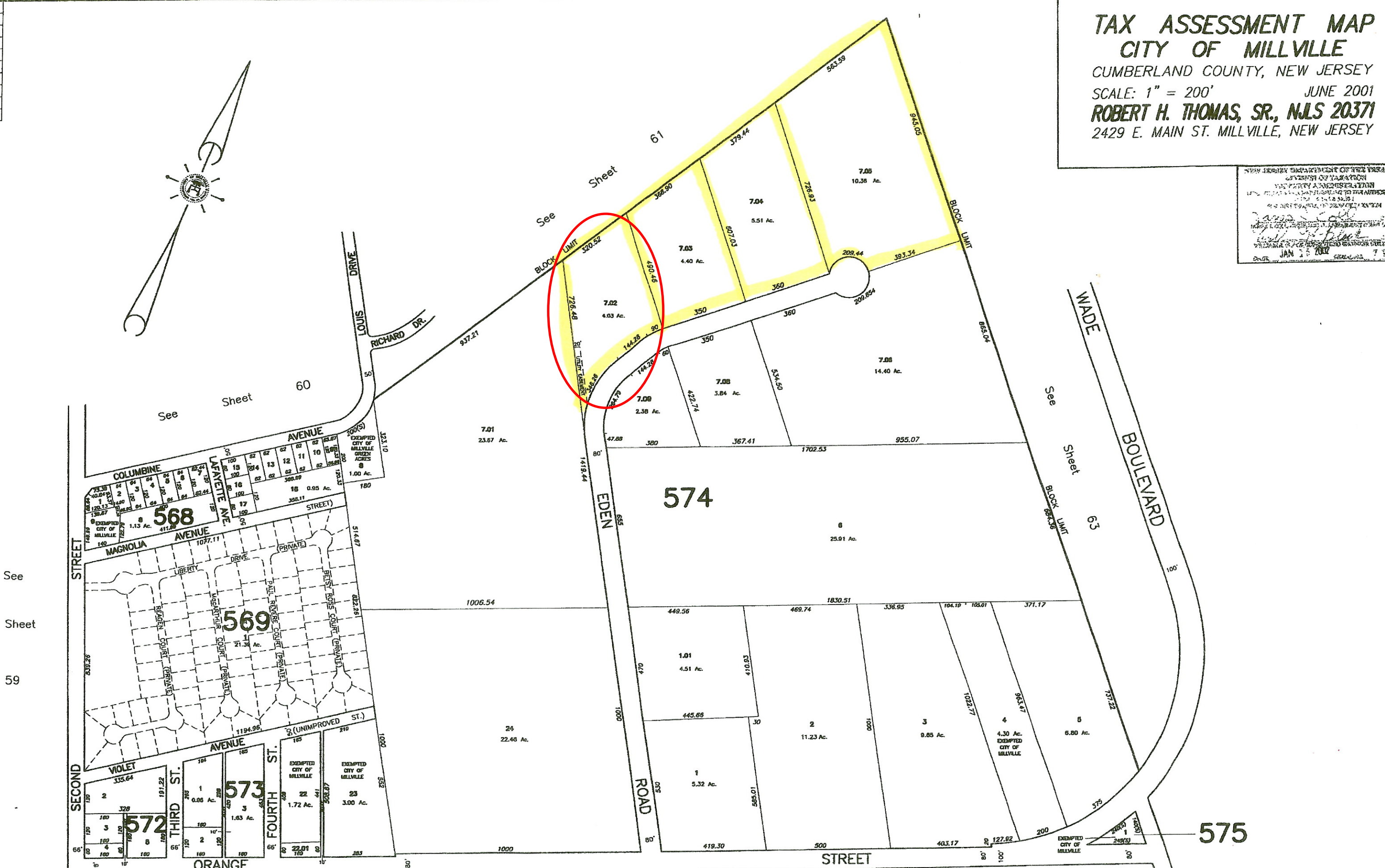
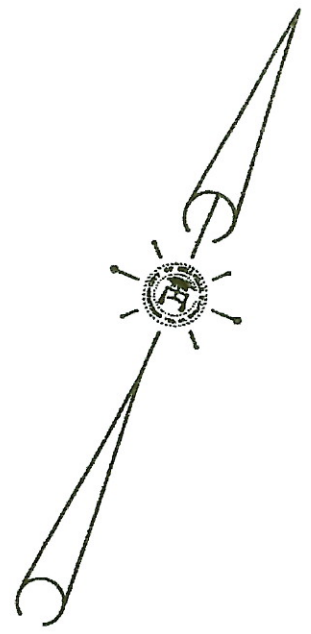


|        |
|--------|
| NUMBER |
| 20371  |
| 20371  |
|        |
|        |
|        |
|        |
|        |
|        |
|        |

**TAX ASSESSMENT MAP**  
**CITY OF MILLVILLE**  
 CUMBERLAND COUNTY, NEW JERSEY  
 SCALE: 1" = 200'  
 JUNE 2001  
**ROBERT H. THOMAS, SR., NJS 20371**  
 2429 E. MAIN ST. MILLVILLE, NEW JERSEY

NEW JERSEY DEPARTMENT OF TREASURY  
 DIVISION OF TAXATION  
 THE PROPERTY APPRAISAL SECTION  
 MILLVILLE, NEW JERSEY  
 DATE: JAN 25 2002



See  
 Sheet  
 59

See  
 Sheet  
 65

575