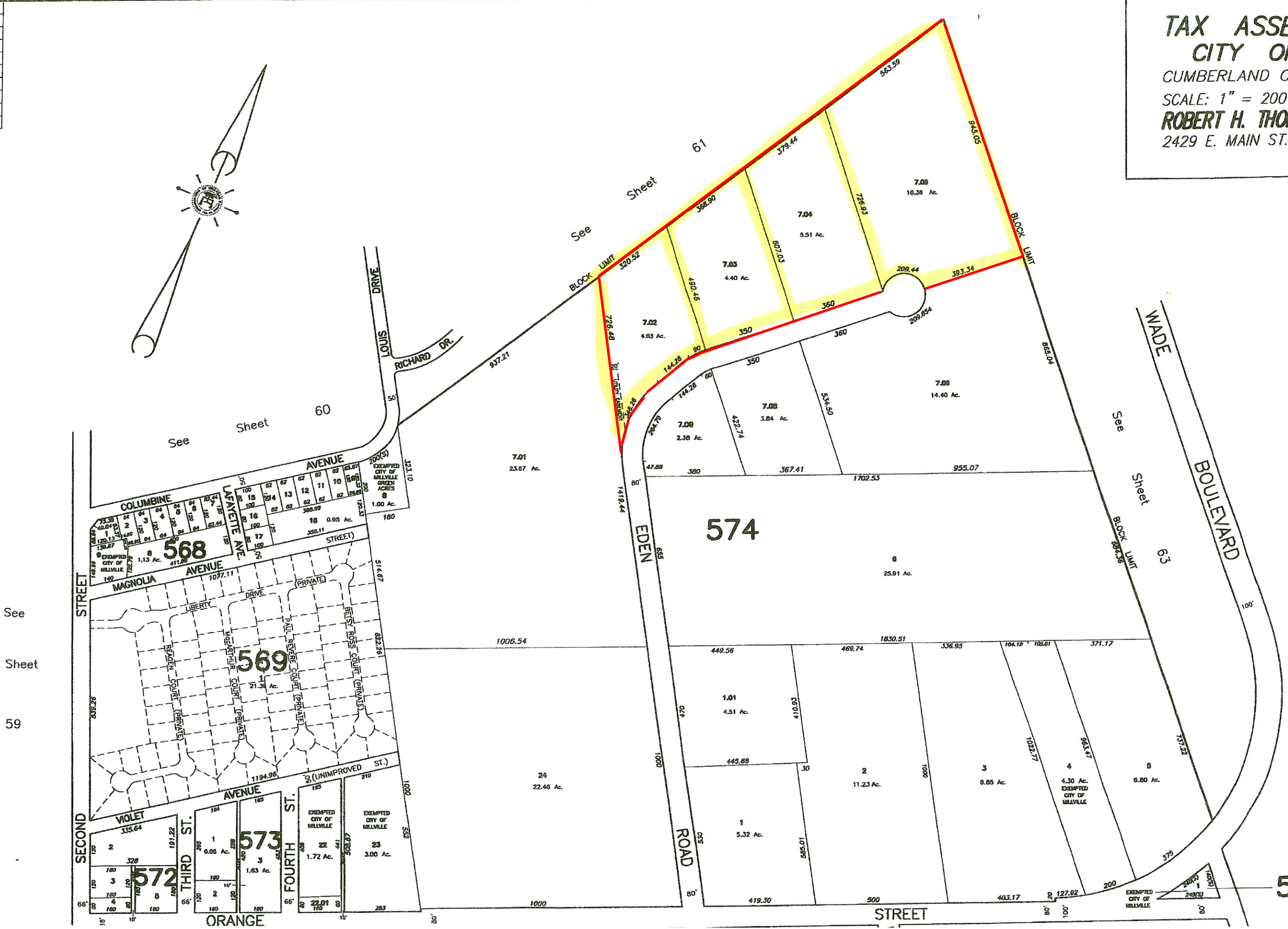
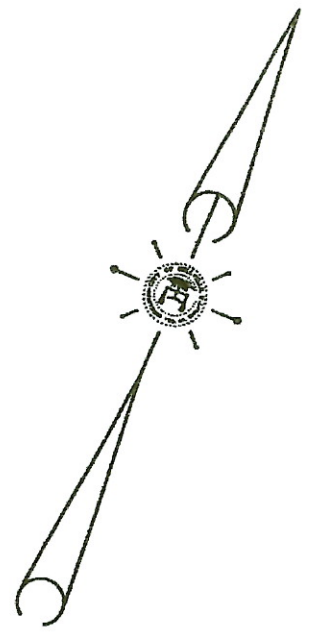


NUMBER
20371
20371

TAX ASSESSMENT MAP CITY OF MILLVILLE

CUMBERLAND COUNTY, NEW JERSEY
SCALE: 1" = 200'
JUNE 2001
ROBERT H. THOMAS, SR., NJS 20371
2429 E. MAIN ST. MILLVILLE, NEW JERSEY

NEW JERSEY DEPARTMENT OF TREASURY
DIVISION OF TAXATION
PROPERTY APPRAISAL SECTION
MILLVILLE, NEW JERSEY
DATE: JAN 25 2002



See
Sheet
59

See
Sheet
65

575