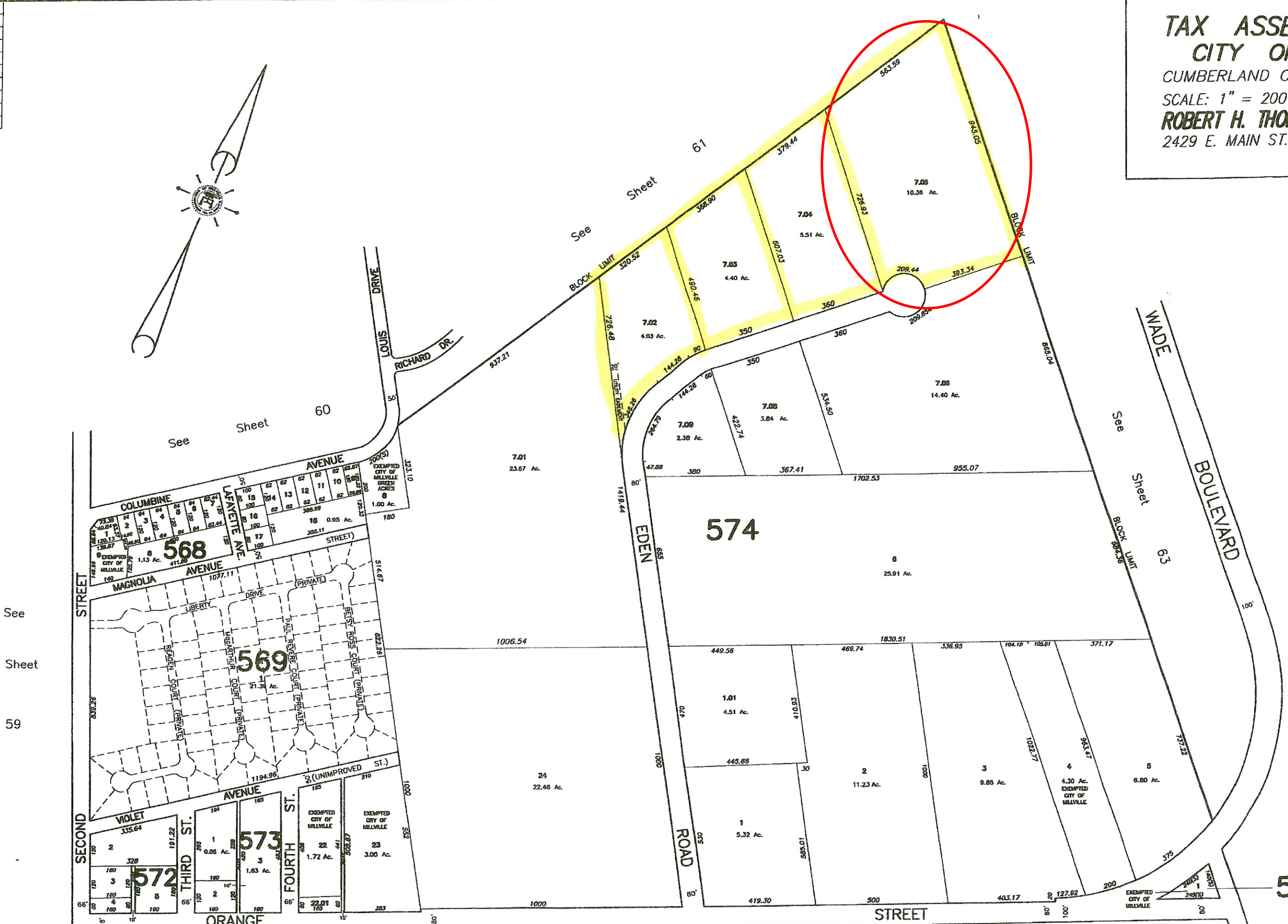
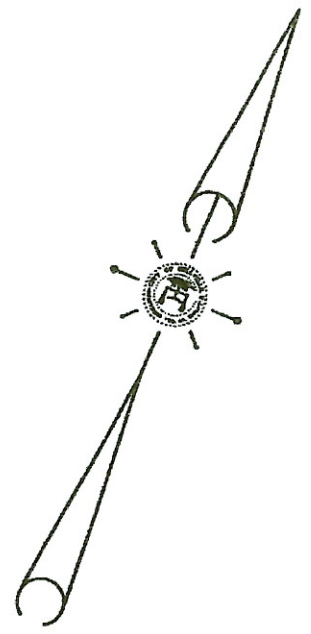


NUMBER
20371
20371

TAX ASSESSMENT MAP
CITY OF MILLVILLE
 CUMBERLAND COUNTY, NEW JERSEY
 SCALE: 1" = 200'
 JUNE 2001
ROBERT H. THOMAS, SR., NJS 20371
 2429 E. MAIN ST. MILLVILLE, NEW JERSEY

NEW JERSEY DEPARTMENT OF TREASURY
 DIVISION OF TAXATION
 THE PROPERTY APPRAISAL SECTION
 MILLVILLE, NEW JERSEY
 DATE: JAN 25 2002



575