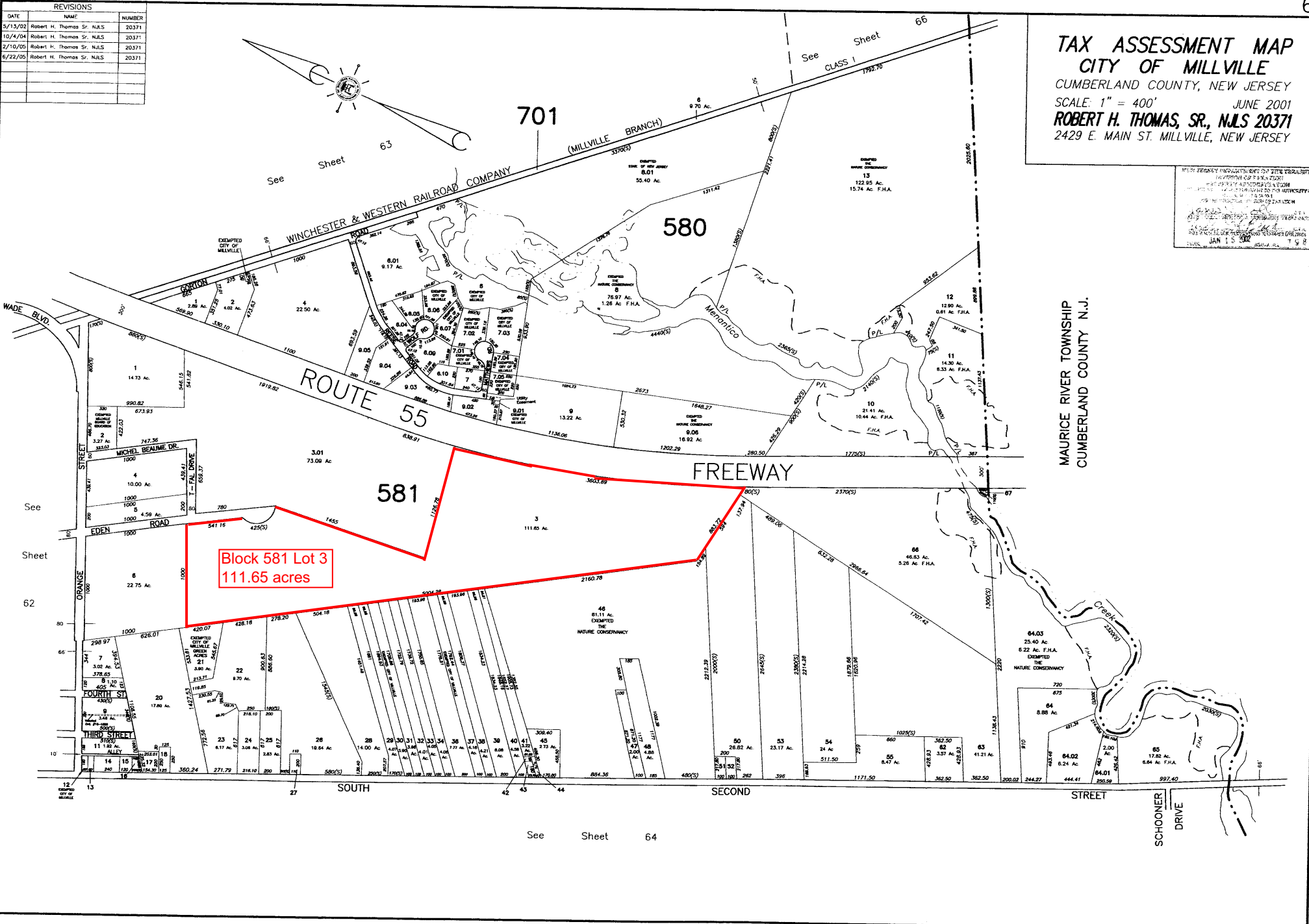


REVISIONS		
DATE	BY	NUMBER
5/13/02	Robert H. Thomas Sr. N.J.S.	20371
10/4/04	Robert H. Thomas Sr. N.J.S.	20371
2/10/05	Robert H. Thomas Sr. N.J.S.	20371
6/22/05	Robert H. Thomas Sr. N.J.S.	20371

TAX ASSESSMENT MAP
CITY OF MILLVILLE
 CUMBERLAND COUNTY, NEW JERSEY
 SCALE: 1" = 400' JUNE 2001
ROBERT H. THOMAS, SR., N.J.S. 20371
 2429 E. MAIN ST. MILLVILLE, NEW JERSEY

THIS MAP WAS PREPARED BY THE CITY ENGINEER
 IN ACCORDANCE WITH THE PROVISIONS OF THE
 "ACT TO AMEND THE CITY ENGINEER'S DUTIES"
 PASSED BY THE LEGISLATURE ON APRIL 23, 1991
 AND THE PROVISIONS OF THE "ACT TO AMEND
 THE CITY ENGINEER'S DUTIES" PASSED BY THE
 LEGISLATURE ON JANUARY 15, 2001
 T.S.R.



MAURICE RIVER TOWNSHIP
 CUMBERLAND COUNTY N.J.

Block 581 Lot 3
111.65 acres

THIS MAP IS A UNOFFICIAL COPY OF THE TAX MAP PREPARED BY ROBERT H. THOMAS, SR., N.J.S. AND NOTED AS SUCH. THE CITY ENGINEER'S OFFICE IS NOT RESPONSIBLE FOR THE ACCURACY OF THIS MAP.