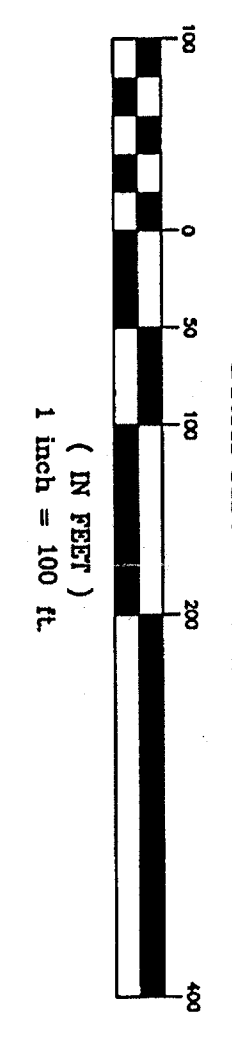


ONLY CORNER FROM THE ORIGINAL MAP OF THE PLAT COUNTRY...  
 THIS PLAT HAS BEEN PREPARED WITHOUT THE BENEFIT OF A...  
 THE PROPERTY OF THE SURVEYOR IS NOT GUARANTEED...  
 ANY UNRECORDED ENCUMBRANCES OR RIGHTS OF WAY...  
 THE ORIGINAL OF THIS DRAWING IS THE PROPERTY OF...  
 FRALINGER ENGINEERING

**LEGEND**

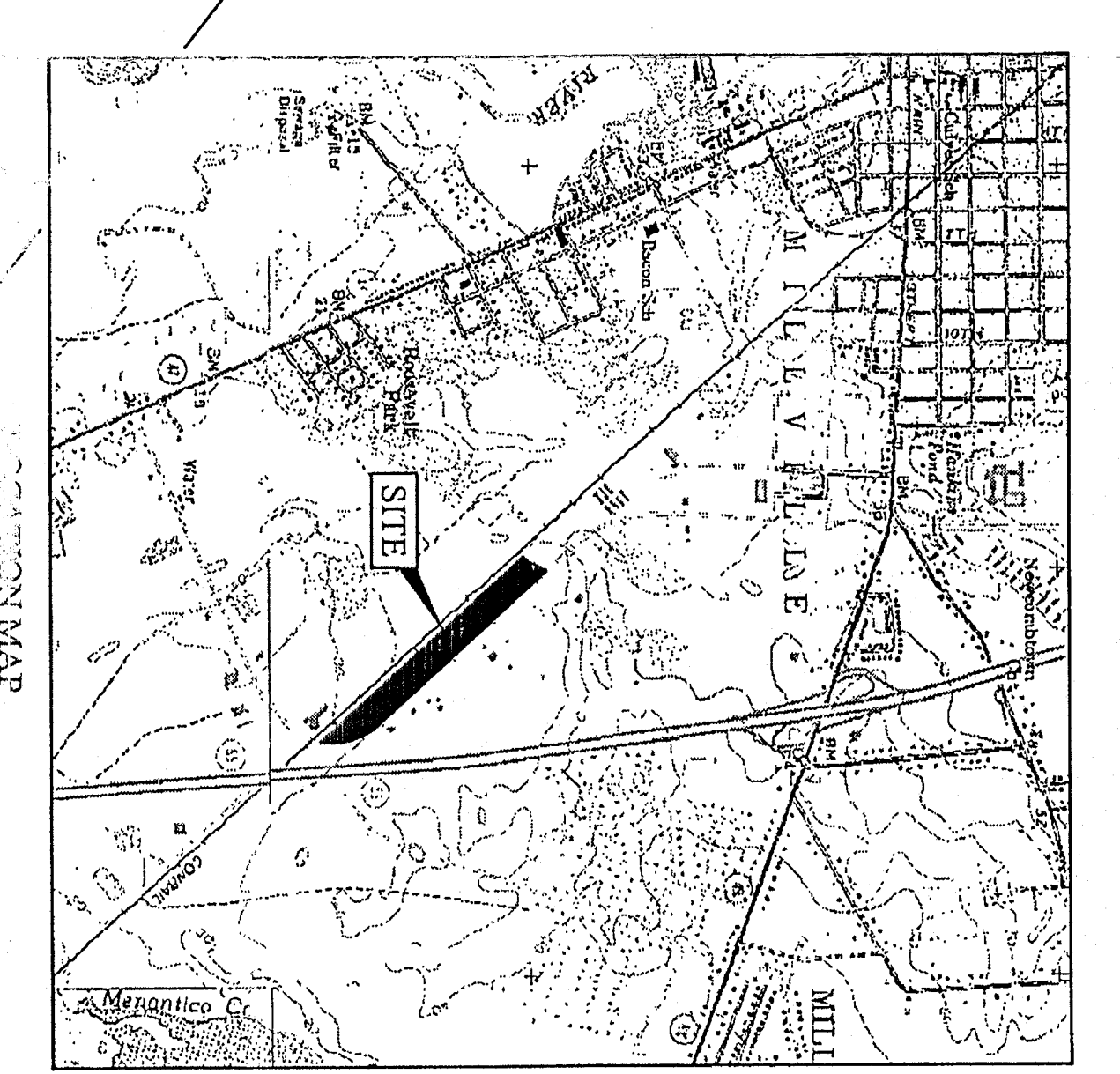
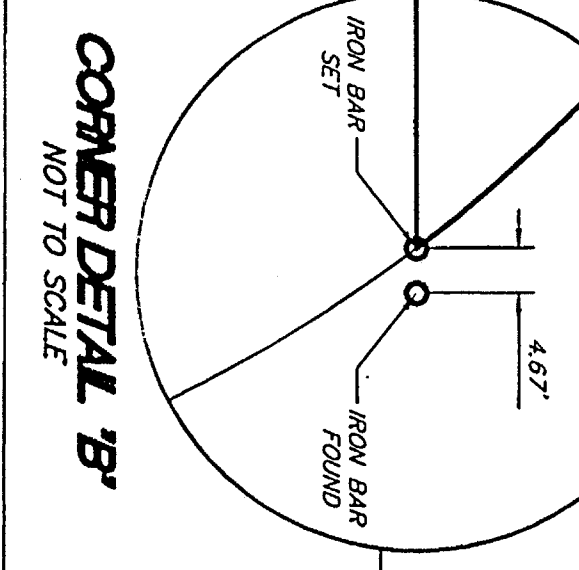
- 35' EXISTING CONTIGUOUS ELEVATION
- 35.5' EXISTING SPOT ELEVATION
- R.O.M. RIGHT OF WAY
- EP EDGE OF PAVEMENT
- TC TOP OF CURB
- BOC BOTTOM OF DEPRESSION CURB
- UTILITY POLE
- STORMWATER INLET
- MANHOLE
- UTILITY POLE
- CONCRETE CURB
- WATER MAIN
- GAS MAIN
- OPENED WINGS
- SLOPED CLEARWAY

**GRAPHIC SCALE**



**GENERAL NOTES**

1. TAX MAP REFERENCE:  
SHEET 63  
BLOCK 577  
LOT 1
2. DEED REFERENCE:  
BOOK 2317  
PAGE 1-5-1095
3. TOTAL AREA: 21.4082 ACRES



BOUNDARY & TOPOGRAPHIC SURVEY FOR STANKER & GALETTO, INC.	
MUNICIPALITY	CITY OF MILLVILLE
COUNTY	CUMBERLAND COUNTY
STATE	NEW JERSEY
SCALE	1"=100'
COMMISSION NUMBER	23535.00
CAO FILE NUMBER	2353500-SURVEY.dwg
DATE	6/28/2005
DRAWN BY	QAB

**Fralinger Engineering PA**  
 CONSULTING ENGINEERS  
 PLANNERS  
 ENVIRONMENTAL SERVICES  
 & LAND SURVEYORS

629 SHILOH PIKE  
 BRIDGEVILLE, NJ 08002  
 (856) 451-2990 PHONE (856) 455-9702 FAX  
[www.fralinger.com](http://www.fralinger.com)

NO.	DATE	REVISION	BY

GUY M. DE FABRITES, P.L.S., P.P.  
 PROFESSIONAL LAND SURVEYOR N.J. LIC. NO. 34443  
 PROFESSIONAL PLANNER N.J. LIC. NO. 4688

*[Signature]*  
 DATE

GA103