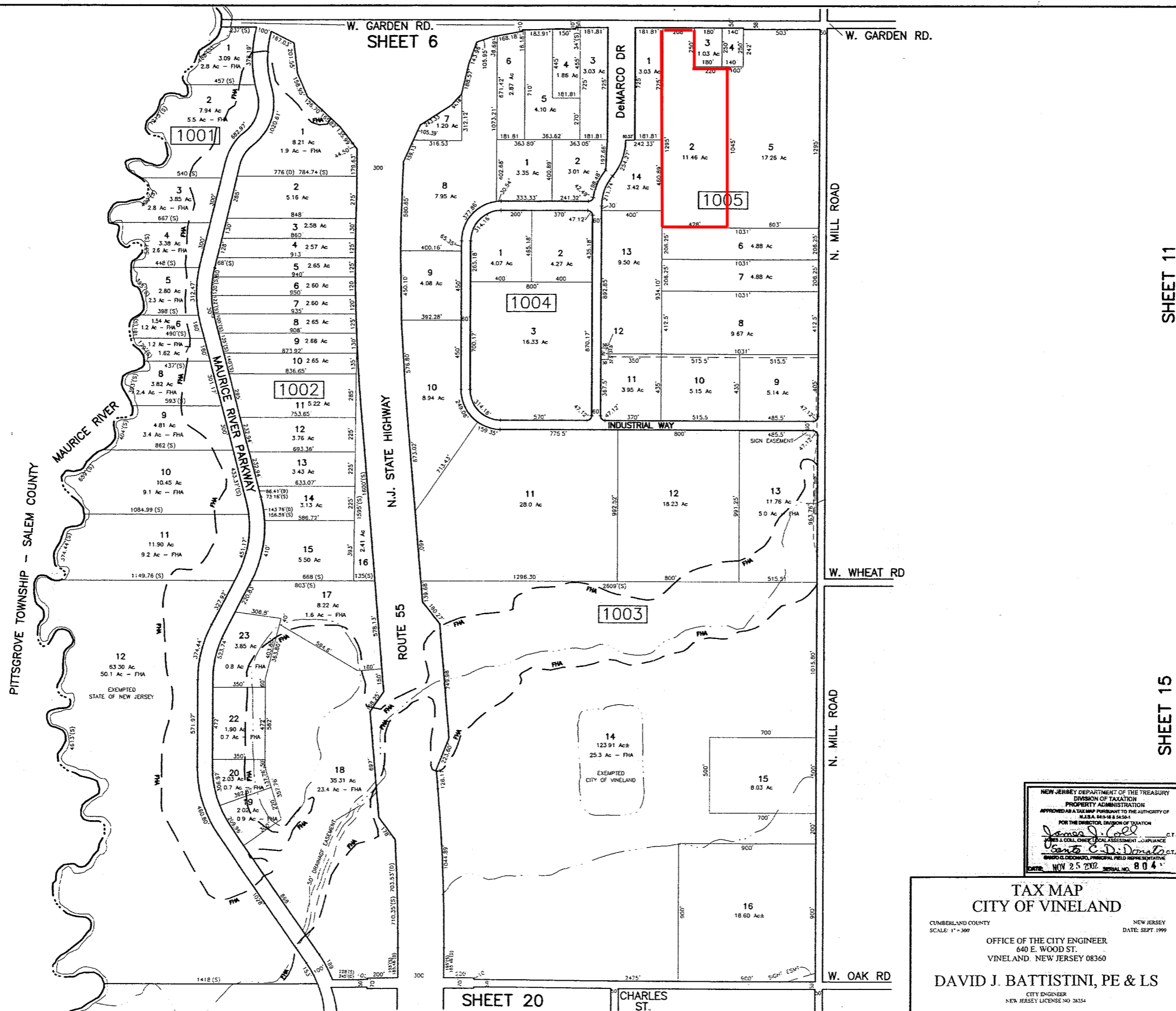


REVISIONS		
DATE	BY	LIC. NO.
OCT 22, 2002	ARM (COA# 24GA27973300)	17775
JUL 14, 2003	ARM (COA# 24GA27973300)	17775
MAR 3, 2005	ARM (COA# 24GA27973300)	17775



SHEET 11

SHEET 15

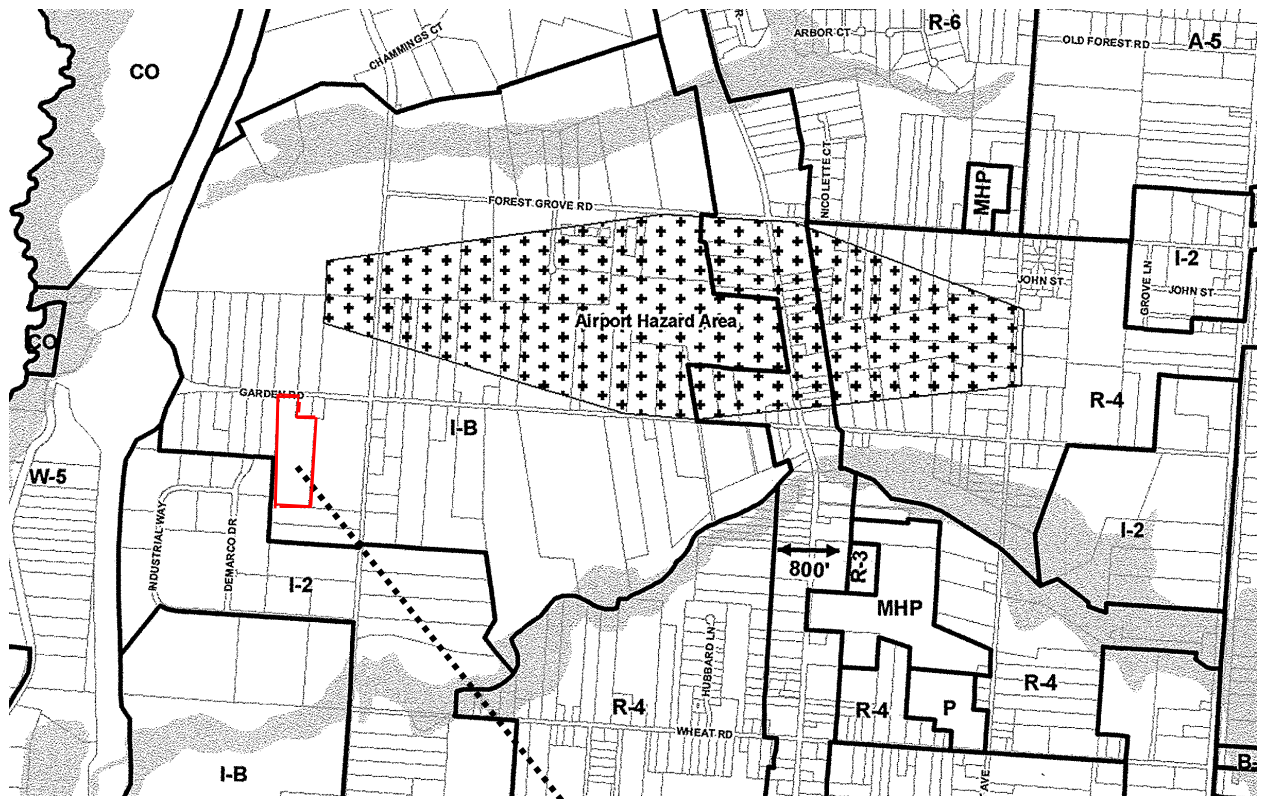
SHEET 20

CHARLES ST.

NEW JERSEY DEPARTMENT OF THE TREASURY
 DIVISION OF TAXATION
 PROPERTY ADMINISTRATION
 APPROVED AS A TAX MAP PURSUANT TO THE AUTHORITY OF
 N.J.S.A. 54:27-26 & 54:27-27
 FOR THE DIRECTOR, DIVISION OF TAXATION
James J. Wolf C.T.A.
Robert C. DiDomenico C.T.A.
 SENIOR CLERK, COMPLIANCE
 SENIOR CLERK, COMPLIANCE
 DATE: NOV 25 2002 SERIAL NO. 804

TAX MAP
CITY OF VINELAND
 CUMBERLAND COUNTY NEW JERSEY
 SCALE: 1" = 300' DATE: SEPT. 1999
 OFFICE OF THE CITY ENGINEER
 640 E. WOOD ST.
 VINELAND, NEW JERSEY 08360
DAVID J. BATTISTINI, PE & LS
 CITY ENGINEER
 NEW JERSEY LICENSE NO. 28254

THIS MAP HAS BEEN DRAWN USING COMPUTER AIDED DRAFTING DESIGN (CADD)



BLOCK 1005
LOT 2

- I-B Industrial-Business
- I-2 Industrial
- R-4 Residential
- W-5 Woodlands
- CO Conservation

CITY OF VINELAND ZONING MAP