

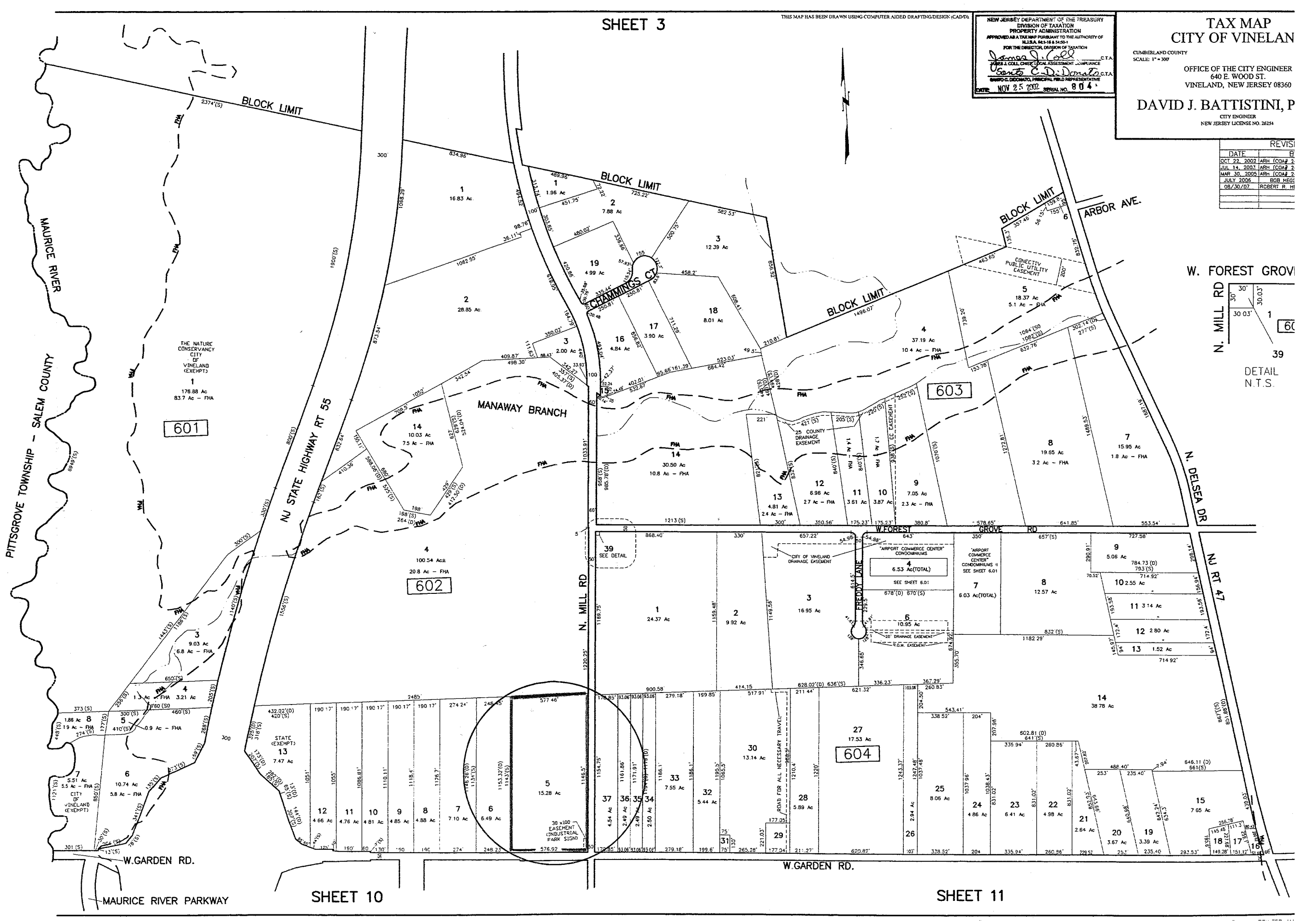
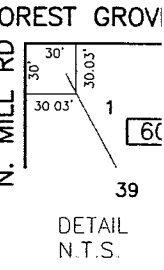
NEW JERSEY DEPARTMENT OF THE TREASURY
 DIVISION OF TAXATION
 PROPERTY ADMINISTRATION
 APPROVED AS A TAX MAP PURSUANT TO THE AUTHORITY OF
 N.J.S.A. 54:16 & 54:5-1
 FOR THE DIRECTOR, DIVISION OF TAXATION
James J. [Signature] C.T.A.
 JAMES J. COLLIER, CHIEF, LOCAL ASSESSMENT COMPLIANCE
Robert C. D. [Signature] C.T.A.
 ROBERT C. DICICCATO, PRINCIPAL FIELD REPRESENTATIVE
 DATE: NOV 25 2002 SERIAL NO. 804

TAX MAP
 CITY OF VINELAND

CUMBERLAND COUNTY
 SCALE: 1" = 300'
 OFFICE OF THE CITY ENGINEER
 640 E. WOOD ST.
 VINELAND, NEW JERSEY 08360

DAVID J. BATTISTINI, P
 CITY ENGINEER
 NEW JERSEY LICENSE NO. 26254

DATE	REVIS
OCT 22, 2002	ARH (CO#2 2)
JUL 14, 2002	ARH (CO#2 2)
MAR 30, 2005	ARH (CO#2 2)
JULY 2006	BOB HEGG
08/30/07	ROBERT R. H

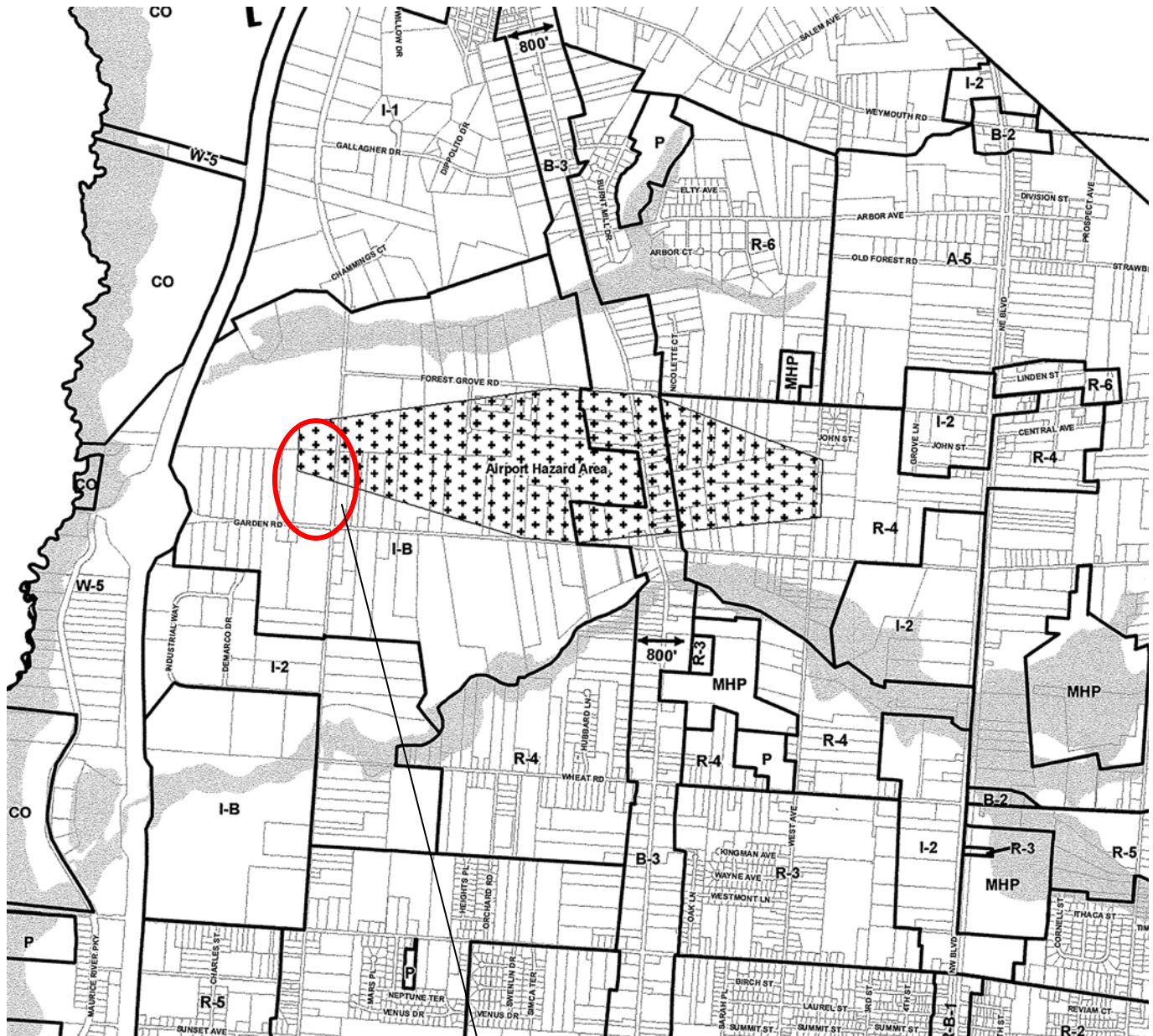


601

602

603

604



BLOCK 602, LOT 5
 1946 W. GARDEN RD.

- B-3 Business
- I-1 Industrial
- I-2 Industrial
- I-B Industrial-Business
- R-4 Residential

CITY OF VINELAND ZONING MAP