

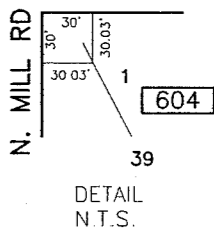
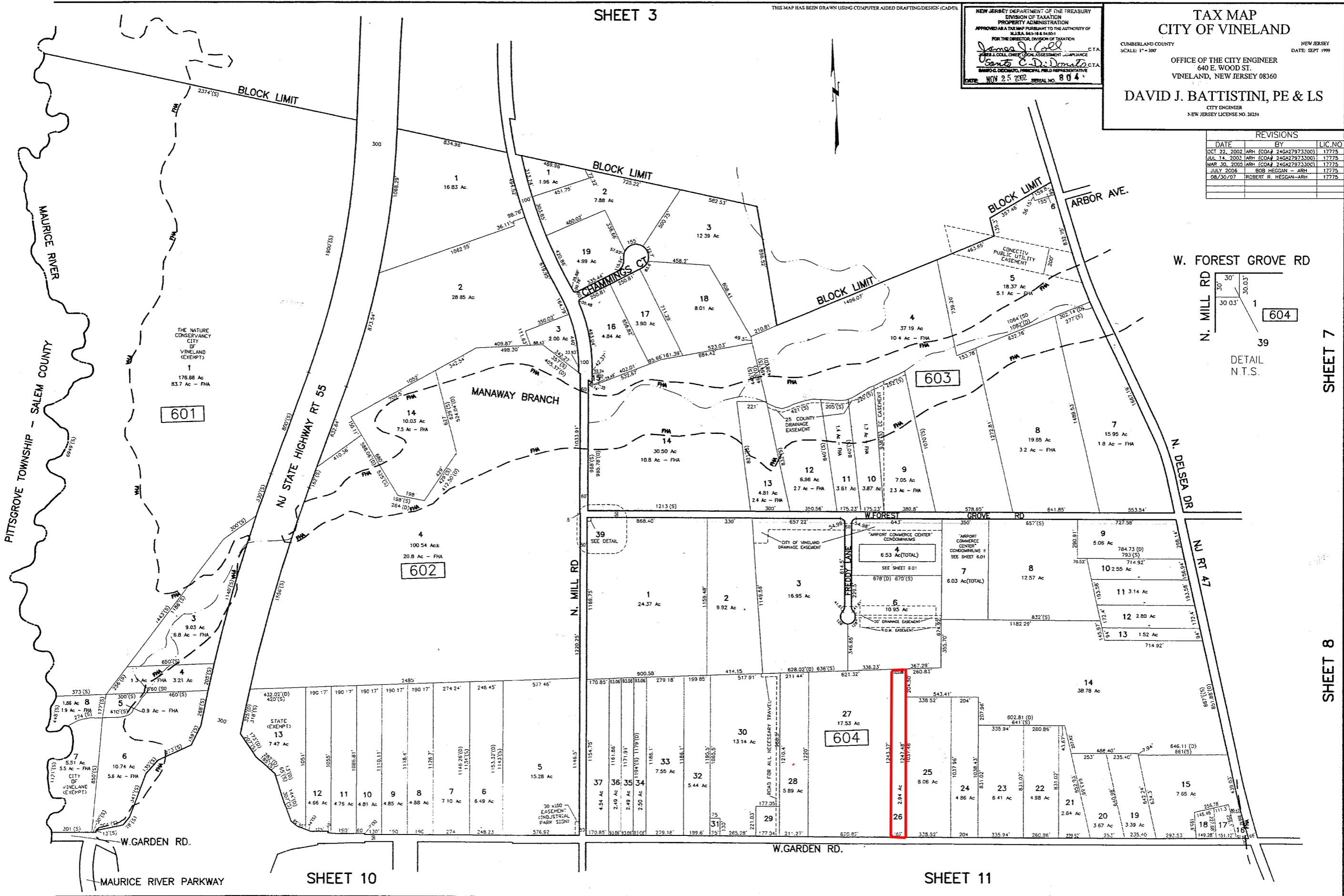
SHEET 3

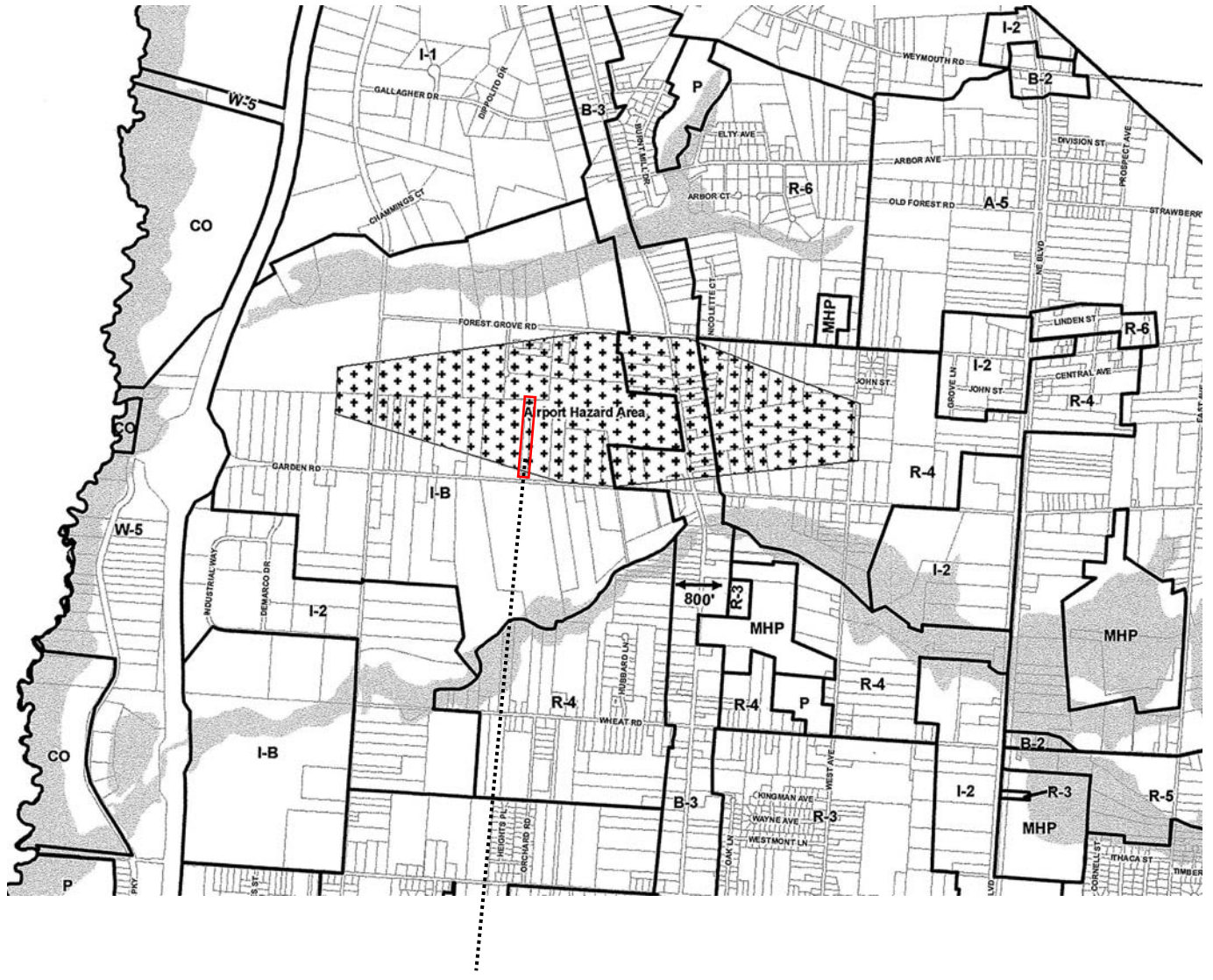
THIS MAP HAS BEEN DRAWN USING COMPUTER AIDED DRAFTING DESIGN (CAD)

NEW JERSEY DEPARTMENT OF THE TREASURY
 DIVISION OF TAXATION
 PROPERTY ADMINISTRATION
 APPROVED AS A TAX MAP PURSUANT TO THE AUTHORITY OF
 N.J.S.A. 54:18 & 54:50-1
 FOR THE DIRECTOR, DIVISION OF TAXATION
James J. Cozz C.T.A.
Robert A. Coll. Chief, Local Assessment Compliance
Carlyle C. DiDomenico C.T.A.
 BARRY G. DICOMATO, PRINCIPAL FIELD REPRESENTATIVE
 DATE: NOV 25 2007 SERIAL NO. 804

TAX MAP
 CITY OF VINELAND
 CUMBERLAND COUNTY NEW JERSEY
 SCALE: 1" = 300' DATE: SEPT 1999
 OFFICE OF THE CITY ENGINEER
 640 E. WOOD ST.
 VINELAND, NEW JERSEY 08360
DAVID J. BATTISTINI, PE & LS
 CITY ENGINEER
 NEW JERSEY LICENSE NO. 26254

REVISIONS		
DATE	BY	LIC. NO.
OCT 22, 2002	ARH (COA# 246A27973300)	17775
JUL 14, 2003	ARH (COA# 246A27973300)	17775
MAR 30, 2005	ARH (COA# 246A27973300)	17775
JULY 2006	ROB HEGGAN - ARH	17775
08/30/07	ROBERT R. HEGGAN-ARH	17775





BLOCK 604 LOT 26

- I-B Industrial-Business
- I-2 Industrial
- I-4 Industrial
- R-4 Residential

from CITY OF VINELAND ZONING MAP