

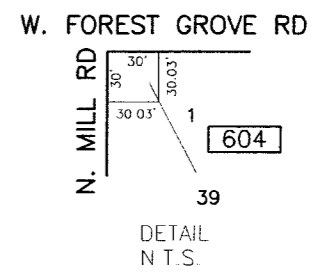
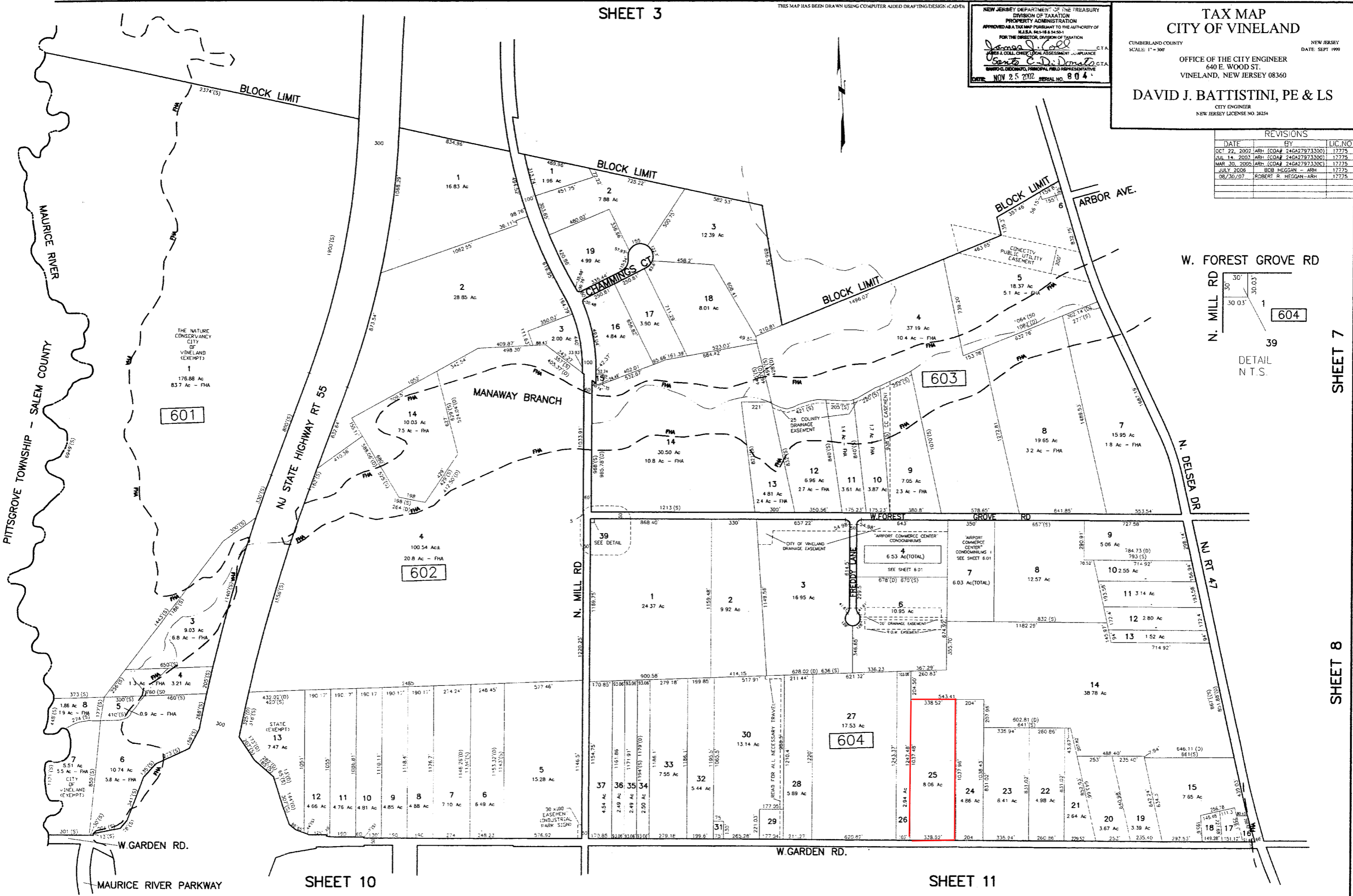
SHEET 3

THIS MAP HAS BEEN DRAWN USING COMPUTER AIDED DRAFTING DESIGN (CAD) TA

NEW JERSEY DEPARTMENT OF THE TREASURY  
 DIVISION OF TAXATION  
 PROPERTY ADMINISTRATION  
 APPROVED AS A TAX MAP PURSUANT TO THE AUTHORITY OF  
 N.J.S.A. 54:18 & 54:50-1  
 FOR THE DIRECTOR, DIVISION OF TAXATION  
*James J. Cole* C.T.A.  
*Barbara C. DiDona* C.T.A.  
 SUPERVISOR OF LOCAL OFFICIAL ASSESSMENT - ASSISTANCE  
 SUPERVISOR OF LOCAL OFFICIAL ASSESSMENT - ASSISTANCE  
 DATE: NOV 25 2007 SERIAL NO. 804

**TAX MAP**  
**CITY OF VINELAND**  
 CUMBERLAND COUNTY NEW JERSEY  
 SCALE: 1" = 300' DATE: SEPT 1999  
 OFFICE OF THE CITY ENGINEER  
 640 E. WOOD ST.  
 VINELAND, NEW JERSEY 08360  
**DAVID J. BATTISTINI, PE & LS**  
 CITY ENGINEER  
 NEW JERSEY LICENSE NO. 24254

REVISIONS		
DATE	BY	LIC. NO.
OCT 22, 2002	ARH (COA# 24627973300)	17775
JUL 14, 2003	ARH (COA# 24627973300)	17775
MAR 30, 2005	ARH (COA# 24627973300)	17775
JULY 2006	BOB HEGGAN - ARH	17775
08/30/07	ROBERT R. HEGGAN - ARH	17775



SHEET 7

SHEET 8

SHEET 10

SHEET 11



BLOCK 604 LOT 25

- I-B Industrial-Business
- I-2 Industrial
- I-4 Industrial
- R-4 Residential

from CITY OF VINELAND ZONING MAP