

SHEET 3

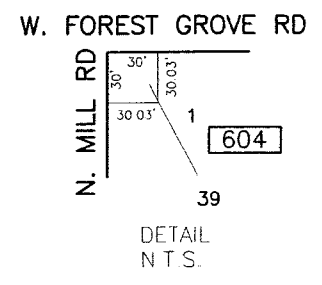
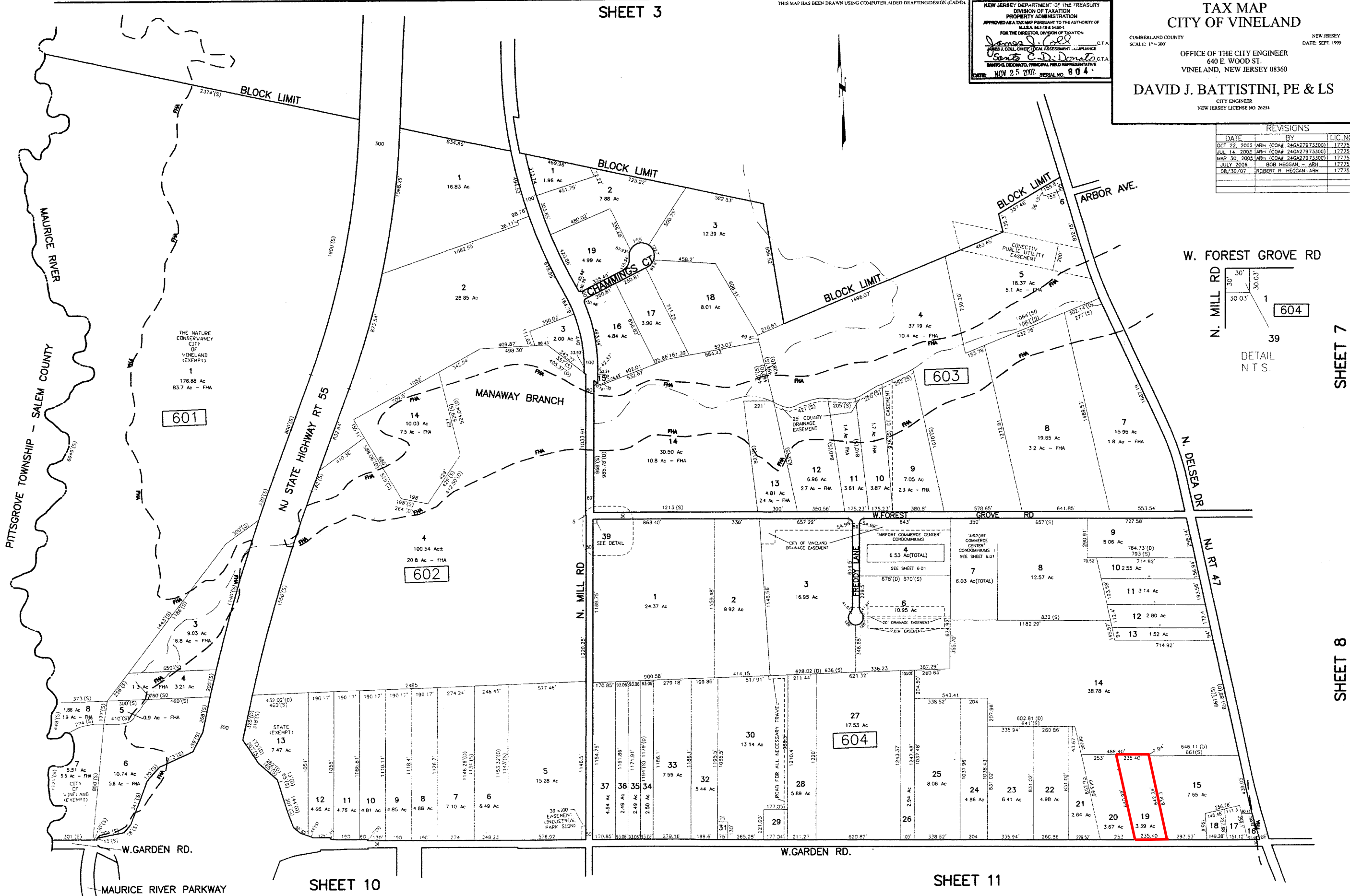
THIS MAP HAS BEEN DRAWN USING COMPUTER AIDED DRAFTING DESIGN (CAD)

NEW JERSEY DEPARTMENT OF THE TREASURY
 DIVISION OF TAXATION
 PROPERTY ADMINISTRATION
 APPROVED AS A TAX MAP PURSUANT TO THE AUTHORITY OF
 N.J.S.A. 54:18 & 54:50-1
 FOR THE DIRECTOR, DIVISION OF TAXATION
James J. Cole C.T.A.
Robert E. DeDonato C.T.A.
 BARRY G. DICICCATO, PRINCIPAL FIELD REPRESENTATIVE
 DATE: NOV 25 2002 SERIAL NO. 804

TAX MAP
CITY OF VINELAND

CUMBERLAND COUNTY NEW JERSEY
 SCALE: 1" = 300'
 OFFICE OF THE CITY ENGINEER
 640 E. WOOD ST.
 VINELAND, NEW JERSEY 08360
DAVID J. BATTISTINI, PE & LS
 CITY ENGINEER
 NEW JERSEY LICENSE NO. 26254

REVISIONS			
DATE	BY	LIC. NO.	
OCT 22, 2002	ARRH (COA# 246A27973300)	17775	
JUL 14, 2003	ARRH (COA# 246A27973300)	17775	
MAR 30, 2005	ARRH (COA# 246A27973300)	17775	
JULY 2006	BOB HEGGAN - ARRH	17775	
08/30/07	ROBERT R. HEGGAN-ARRH	17775	



SHEET 7

SHEET 8

SHEET 10

SHEET 11



BLOCK 604, LOT 19

- I-2 Industrial
- I-4 Industrial
- B-3 Business
- R-4 Residential

from CITY OF VINELAND ZONING MAP