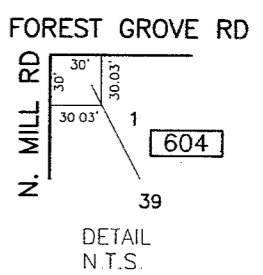
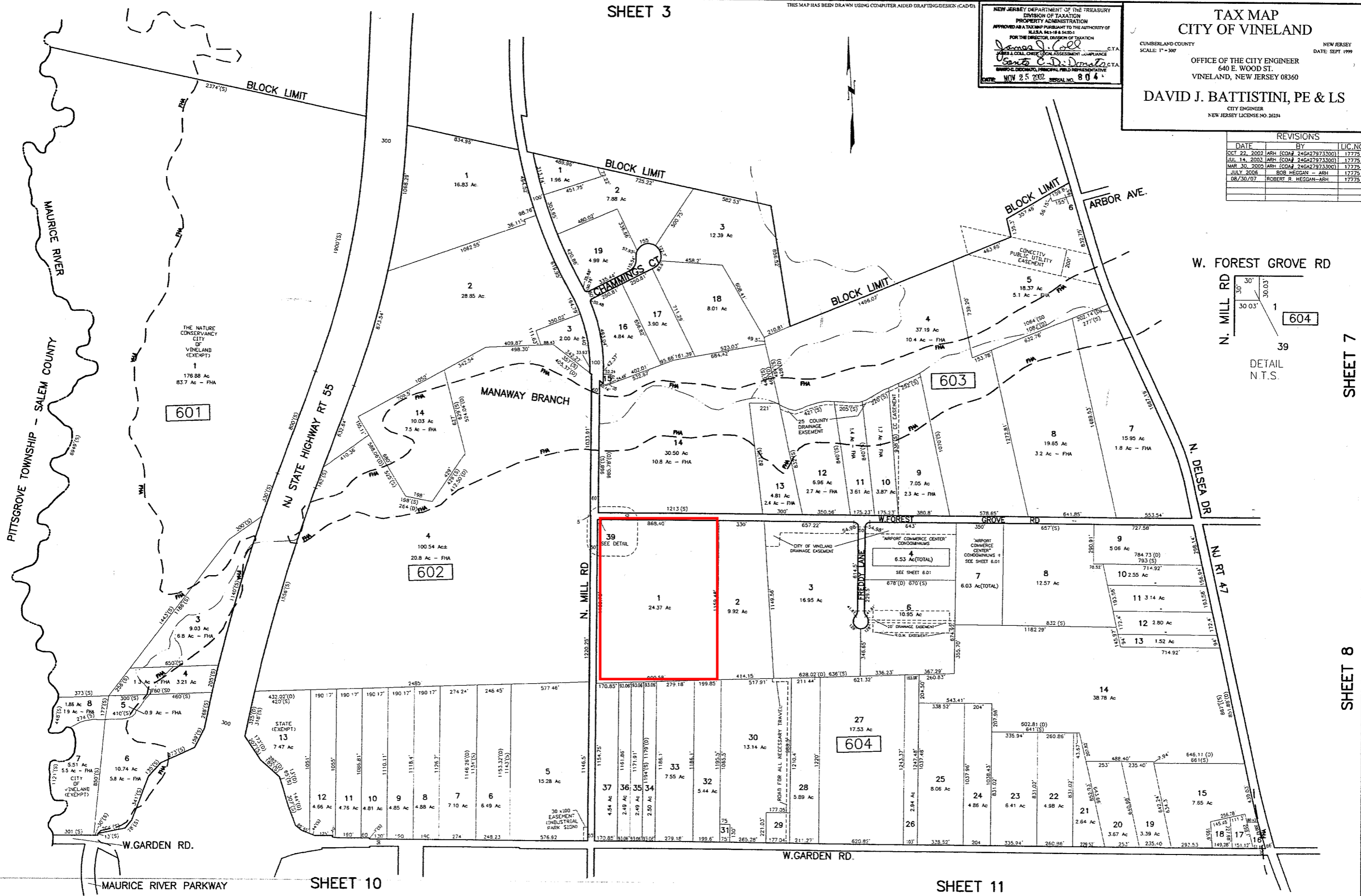


NEW JERSEY DEPARTMENT OF THE TREASURY
 DIVISION OF TAXATION
 PROPERTY ADMINISTRATION
 APPROVED AS A TAX MAP PURSUANT TO THE AUTHORITY OF
 N.J.S.A. §§ 18-18 & 18-29
 FOR THE DIRECTOR, DIVISION OF TAXATION
James J. Cole C.T.A.
Joseph J. Coll C.E.A.
Barbara C. DeMatteis C.T.A.
 DATE: NOV 25 2007 SERIAL NO. 804

TAX MAP
 CITY OF VINELAND
 CUMBERLAND COUNTY
 SCALE: 1" = 300'
 OFFICE OF THE CITY ENGINEER
 640 E. WOOD ST.
 VINELAND, NEW JERSEY 08360
 DAVID J. BATTISTINI, PE & LS
 CITY ENGINEER
 NEW JERSEY LICENSE NO. 26234
 DATE: SEPT 1999

REVISIONS		
DATE	BY	LIC. NO.
OCT 22, 2002	ARH (CO# 246A27973300)	17775
JUL 14, 2003	ARH (CO# 246A27973300)	17775
MAR 30, 2005	ARH (CO# 246A27973300)	17775
JULY 2006	BOB HEGGAN - ARH	17775
08/30/07	ROBERT R. HEGGAN-ARH	17775





BLOCK 604 LOT 1

- I-2 Industrial
- I-4 Industrial
- R-4 Residential

from CITY OF VINELAND ZONING MAP